

## CHARACTERISTICS

MT 1440 EASY 75D ST3B S1

I.C. ENGINE		
Type		DEUTZ TD 3.6 L4 2501-1714
Fuel		Diesel
Number of cylinders		4 in line
Suction		Supercharged
Injection system		Direct
Ignition sequence		1.3.4.2
Capacity	cm <sup>3</sup>	3621
Bore and stroke	mm	98 x 120
Compression ratio		18:1
Nominal speed laden	rpm	2200
Idling speed slow unladen	rpm	850
Max. speed unladen	rpm	2350
Power ISO/TR 3046	cv - kW	75 - 55,4
Power SAE J 1995	cv - kW	75 - 55,4
Maximum torque ISO/TR 3046	Nm	330 to 1600 rpm
Gravimetric efficiency ISO 5011	%	99,9
Type of cooling		By water
Fan		Puller

TRANSMISSION		
Gear box		DANA
- Type		Mechanical
- Forward/reverse selector		Electro-hydraulic
- Torque converter		DANA
- Number of forward speeds		4
- Number of reverse speeds		4
Angle gear box		-
Front axle		DANA
- Differential		Without locking
Rear axle		DANA
- Differential		Without locking
Drive wheels		4RM Permanent
- Switch for 2/4 drive wheels		No
Front tyres		ALLIANCE
- Size		400/80-24 A325 162A8 ATG
- Pressure	bar	5
Rear tyres		ALLIANCE
- Size		400/80-24 A325 162A8 ATG
- Pressure	bar	5

ELECTRIC CIRCUIT		
Battery	STANDARD	12 V - 110 Ah - 900 A EN
	OPTION	12 V - 180 Ah - 900 A EN
Alternator		14V - 95A
- Type		ISKRA AAK3868
Starter		12 V - 3,2 kW
- Type		ISKRA AZE 4668

BRAKE CIRCUIT		
Service brake		Hydraulic power brake
- Type of brake		Multidisk brake immersed in oil
- Type of control		Foot-operated for the front and rear axles
Parking brake		Low pressure brake
- Type of brake		Disk on gear-box output
- Type of control		Electro-hydraulic

SOUND AND VIBRATION		
Sound pressure level in the driver's cab LpA (according to standard NF EN 12053)	dB(A)	79 (cab closed) ; 00 (cab open)
Sound pressure (according to directive 2009/76)	dB(A)	00 (cab closed) ; 00 (cab open)
Sound pressure level ensured in the LwA environment (according to directive 2000/14/EC modified by directive 2005/88/EC)	dB(A)	102 (measured) ; 104 (ensured)
Sound level in motion (according to directive 2009/63)	dB(A)	
Average weighted acceleration on driver's body (according to standard NF EN 13059)	m/s <sup>2</sup>	1,0
The average weighted acceleration transmitted to the driver's hand/ arm system (according to standard ISO 5349-2)	m/s <sup>2</sup>	< 2,5
Standard seat vibration	m/s <sup>2</sup>	00 (lightweight operator) ; 00 (heavyweight operator)

<b>HYDRAULIC CIRCUIT</b>			
Hydraulic pump		Gear pump with flow divider on 2nd casing	
- Type		1st casing	2nd casing
- Capacity	cm <sup>3</sup>	45	27
- Max. rating capacity unladen	l/mn	106	64
- Flow rate at 1600 rpm	l/mn	72	44
Filtration			
- Return	µm	16	16
- Suction	µm	135	135
Maximum service pressure		270	
- Telescoping circuit	bar	180 / 270	
- Lifting circuit	bar	210 / 270	
- Tilt circuit	bar	270 / 200	
- Stabilizers Circuit	bar	270	
- Tilting corrector circuit (OPTION)	bar	270	
- Attachment circuit (OPTION)	bar	270	
- Steering circuit	bar	145	

<b>HYDRAULIC MOVEMENTS</b>			
Longitudinal stability limiter and warning device		Electronic	
Lifting motions (boom retracted)			
- Unladen lifting	s - m/mn	16 - 23,8	
- Laden lifting	s - m/mn	18 - 21,2	
- Unladen lowering	s - m/mn	12,4 - 30,7	
- Laden lowering	s - m/mn	13 - 29,3	
Telescoping motions (boom raised)			
- Unladen extending	s - m/mn	17 - 24,4	
- Laden extending	s - m/mn	18,7 - 26,4	
- Unladen retracting	s - m/mn	13 - 35,1	
- Laden retracting	s - m/mn	12,8 - 35,6	
Tilting movements			
- Unladen digging	s - °/s	4 - 31,5	
- Forward tilting unladen	s - °/s	4 - 31,5	

<b>SPECIFICATIONS AND WEIGHTS</b>			
Speed of movement for lift truck in standard configuration on flat ground (except particular conditions)			
Front unladen	1	km/h	5,1
	2	km/h	8,1
	3	km/h	15,1
	4	km/h	25,6
Rear unladen	1	km/h	5,1
	2	km/h	8,1
	3	km/h	15,1
	4	km/h	25,6
Standard attachment		TFF 45 MT1040	
- Weight with forks	kg	228	
- Weight of forks (each one)	kg	71	
Rated capacity with standard attachment	kg	4000	
Tipping load at maximum reach on stabilisers	kg	1960	
Distance from the centre of gravity from the load to the lug of the forks	mm	500	
Standard lifting height	mm	13530	
Lift truck weight without attachment	kg	10485	
Lift truck weight with standard attachment			
- Unladen	kg	10855	
- At rated load	kg	14855	
Weight per axle with standard attachment (transport position)			
- Front unladen	kg	5305	
- Rear unladen	kg	5550	
- Front rated load	kg	12655	
- Rear rated load	kg	2200	
Weight per axle with standard attachment (boom extended)			
- Front rated load	kg	10935	
- Rear rated load	kg	220	
Contact pressure on the ground for the whole surface of each stabilizer at maximum load when tilting	kg/cm <sup>2</sup>	5,37	
Drag strain on the coupling hook			
- Unladen (sliding)	daN	7900	
- At rated load (transmission setting)	daN	8320	
Pull strain with open carrier (according to standard ISO 8313)	daN	7400	

## FRONT AND REAR TIRES

MT 1435 ...		PRESSURE (bar)	TYRE LOAD (kg)			
			FRONT UNLADEN	FRONT LADEN	REAR UNLADEN	REAR LADEN
ALLIANCE	400/80-24 A325 162A8 ATG	5	2750	5900	2100	700
GALAXY	15.5-25 16PR GIRAFFE L2	5,2				
MICHELIN	400/80-24 162A8 TUBELESS	5				
MITAS	15.5-25 12PR EM-20 TUBELESS	4,6				

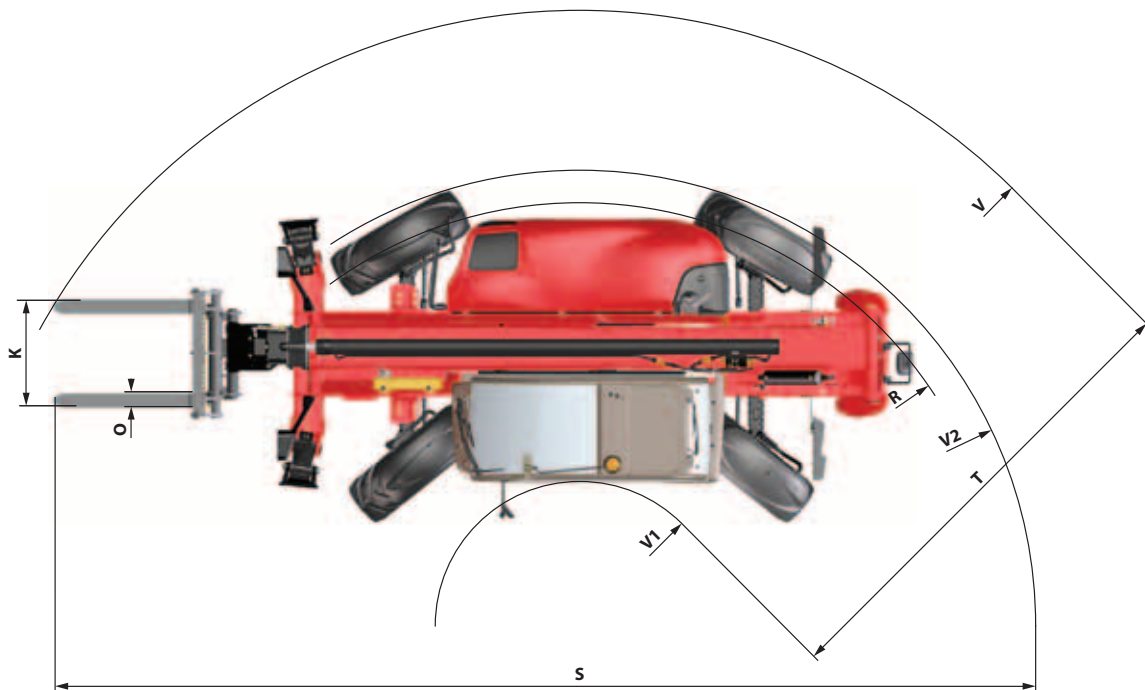
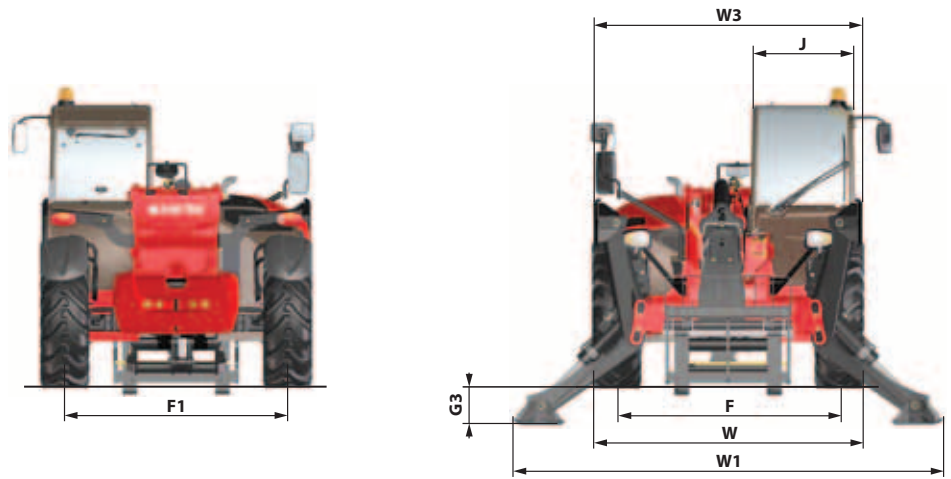
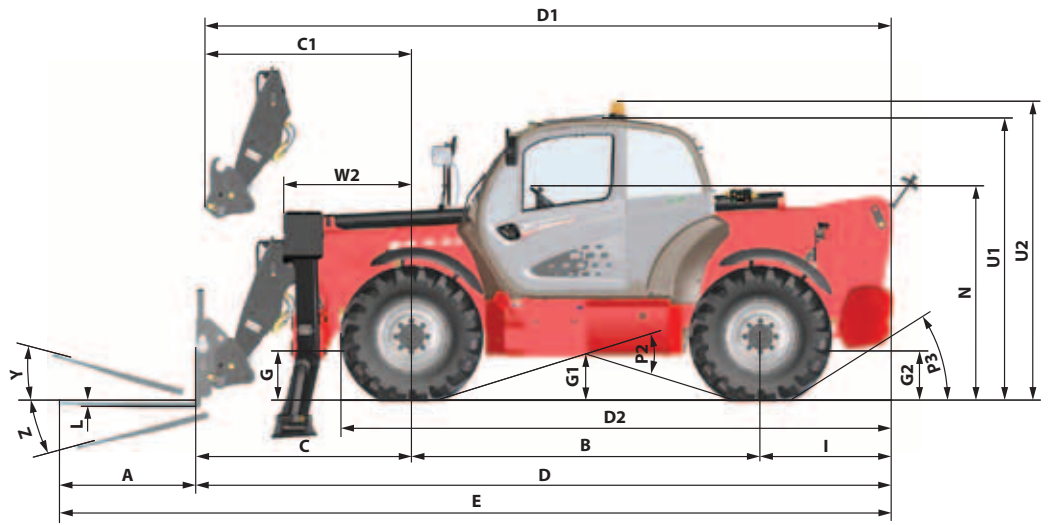
MT 1440 ...		PRESSURE (bar)	TYRE LOAD (kg)			
			FRONT UNLADEN	FRONT LADEN	REAR UNLADEN	REAR LADEN
ALLIANCE	400/80-24 A325 162A8 ATG	5	2650	6350	2750	1100
GALAXY	15.5-25 16PR GIRAFFE L2	5,2				
MICHELIN	400/80-24 162A8 TUBELESS	5				
MITAS	15.5-25 12PR EM-20 TUBELESS	4,6				

MT 1840 ...		PRESSURE (bar)	TYRE LOAD (kg)			
			FRONT UNLADEN	FRONT LADEN	REAR UNLADEN	REAR LADEN
ALLIANCE	440/80-24 A325 168A8 ATG	4,5	2750	6450	3050	1400
GALAXY	15.5-25 16PR GIRAFFE L2	5,2				
MICHELIN	440/80-24 168A8 TUBELESS	4,5				
MITAS	15.5-25 12PR EM-20 TUBELESS	4,6				

		PRESSURE (bar)	LOAD (kg)	PRESSURE ON THE CONTACT SURFACE (kg/cm <sup>2</sup> )		AREA OF THE CONTACT SURFACE (cm <sup>2</sup> )		
				HARD SOIL	LOOSE SOIL	HARD SOIL	LOOSE SOIL	
ALLIANCE	400/80-24 A325 162A8 ATG	5	700					
			1100					
			2100					
			2650					
			2750					
			5900					
			6350					
	440/80-24 A325 168A8 ATG	4,5	1400					
			2750					
			3050					
			6450					
	GALAXY	15.5-25 16PR GIRAFFE L2	5,2	700				
				1100				
				1400				
2100								
2650								
2750								
3050								
5900								
6350								
6450								
MICHELIN	400/80-24 162A8 TUBELESS	5	700	6,10	0,43	122	1428	
			1100	6,90	0,70	159	1548	
			2100	8,52	1,11	240	1847	
			2650	9,38	1,30	282	2000	
			2750	9,53	1,30	289	2007	
			5900	12,36	1,93	472	2981	
			6350	12,73	2,03	498	3115	
	440/80-24 168A8 TUBELESS	4,5	1400	7,13	0,85	193	1650	
			2750	9,10	1,33	302	2064	
			3050	9,40	1,40	323	2156	
			6450	12,30	2,00	526	3200	
			700					
			1100					
			1400					
MITAS	15.5-25 12PR EM-20 TUBELESS	4,6	2100					
			2650					
			2750					
			3050					
			5900					
			6350					
			6450					

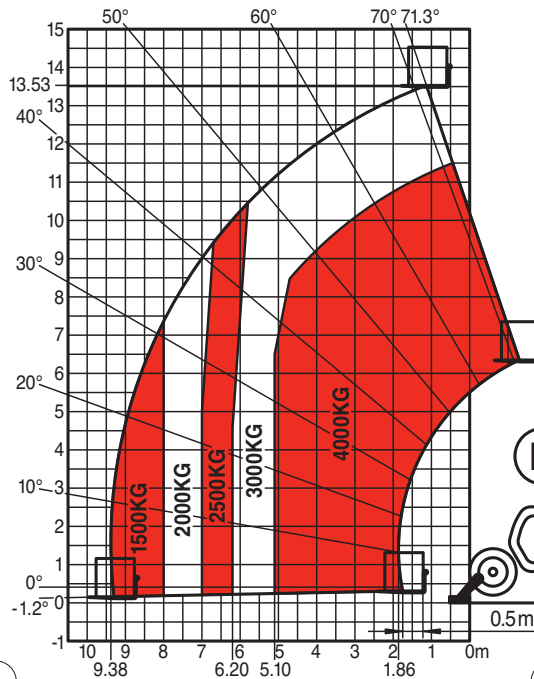
# DIMENSIONS AND LOAD CHART MT 1440 EASY 75D ST3B S1

A	mm	1200
B	mm	3070
C	mm	1905
C1	mm	1790
D	mm	6135
D1	mm	6020
D2	mm	4859
E	mm	7335
F	mm	1960
F1	mm	1960
G	mm	384
G1	mm	367
G2	mm	380
G3	mm	355
I	mm	1160
J	mm	892
K	mm	1040
L	mm	50
N	mm	1855
O	mm	125
P2	°	34
P3	°	33
R	mm	3779
S	mm	8626
T	mm	4183
U1	mm	2452
U2	mm	2640
V	mm	5468
V1	mm	1285
V2	mm	3986
W	mm	2374
W1	mm	3793
W2	mm	1134
W3	mm	2422
Y	°	12
Z	°	114





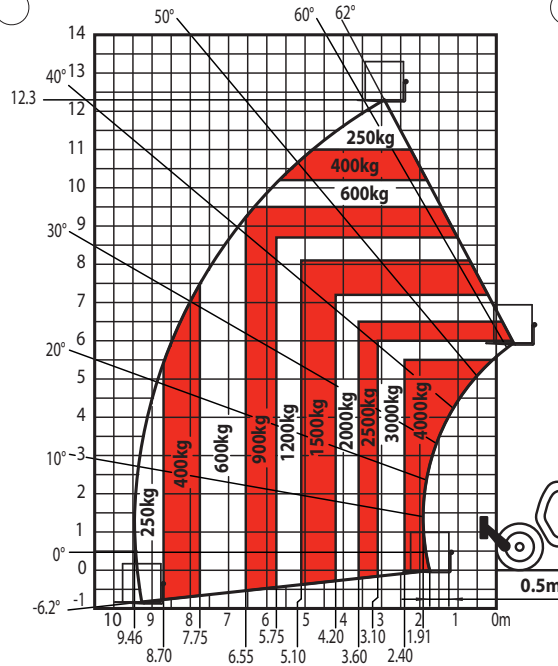
SUIVANT NORME EN 1459 annexe B.



MT 1440 / MT-X1440

N°261552

N°52515626



MT 1440

SUIVANT NORME EN 1459 annexe B.

